

SHARE:

[Join Our Email List](#)

## The Messenger of St. Mark's | After Pentecost | June 13, 2024

For your thought:

*"It is like a mustard seed, which, when sown upon the ground, is the smallest of all the seeds on earth; yet when it is sown it grows up and becomes the greatest of all shrubs, and puts forth large branches, so that the birds of the air can make nests in its shade."*

--Mark 4:31-32



[Study this Sunday's Readings.](#)

Lectionary Note: From 6/2 until Advent (12/1), we will be reading from Track 1 for our Old Testament readings - Psalms, Epistle and Gospel readings will be from Track 2.

**Please note: The Offices of St. Mark's will be closed on Wed., June 19th in observance of Juneteenth.**

## WORSHIP CORNER



Worship on Sunday is both in person and virtually, every week at 9:30 a.m. We live stream Sunday liturgies on our [Facebook](#) & [YouTube](#) channels.

Also, we offer a Midweek Eucharist every Thursday at 11 a.m. that is both in person and on our live-streaming platforms.

[Orders of Worship](#)

**This Sunday's Coffee Hour brought to you by:**

**The 3rd-Sunday-of-the-Month Team (all parishioners with the last names beginning with the letters M-R: please bring ready-to-serve food items this Sunday to share at Coffee Hour).**



A huge THANK YOU to all who bring food to share, and to those serving on coffee-hour teams, for our radical hospitality at St. Mark's would not be possible without your contributions!

[All Offerings](#)

Useful links:

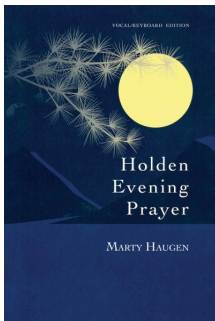
- [Fill out a form](#) to volunteer, donate altar flowers, fill out a new member/visitor form, and more!
- Access and/or edit your [Member Directory](#) information.
- To read or view [previous sermons, click here](#).
- **Schedule a meeting with Mother Sylvia** [by clicking here](#).
- **Schedule a meeting with Deacon David** [by clicking here](#).

**Important Upcoming Dates:**

- Wed., June 19, Juneteenth - Federal Holiday (Offices Closed)
- Wed., June 19, 7 p.m., Singing Summertime Evening Prayer Begins (Hybrid/Nave)
- Sun., June 30, 10:45 a.m., Coffee Hour: Pancake Breakfast - Please bring fruit to share!
- Thurs., July 4, Offices Closed/No Midweek Eucharist today
- Fri-Sun, July 19-21, All-Parish Campout in Bandelier

## SAINT MARK'S MISSION, MINISTRY & OUTREACH

### Starting Wednesday, June 19: Singing Summertime Evening Prayer



**Singing Summertime Evening Prayer**  
**Wednesdays @ 7pm for 7 weeks (Begins Wednesday, June 19th)**

**This summer, join members of St. Mark's choir and congregation for 30 minutes of simple, lovely, contemplative songs and prayers on Wednesday evenings at 7 p.m., beginning June 19th.** We will be using *Holden Evening Prayer*, a sung setting of evening prayer composed by Marty Haugen during the winter of 1985–1986 while at Holden Village in the North Cascade Mountains of Washington state. **All are welcome!**

We encourage you to make a plan to meet up with others before or after Evening Prayer on Wednesday evenings for a picnic supper and/or a one-on-one conversation in the Fish Garden, Courtyard, or Parish Hall.

[Click here to hear a recording of Holden Evening Prayer](#) (If you don't read music that's okay--you can listen and learn!)

[Click here for weekly Wednesday Scripture Readings & Reflection Prompts](#)

For more info, please contact Jeremy Wirths [via email here](#).

[Click here for virtual options.](#)

### 5th Sunday of the Month is Coming: Pancake Breakfast



**Sunday, June 30th after worship (~10:45 a.m.)**

St. Mark's will be hosting a pancake breakfast on Sunday, June 30th, following our worship service. We ask that everyone bring a side of ready-to-eat fruit to share.

### Building Renewal Committee (BRC) Update

Although we have not posted a report recently, we have been riding a swell of activity. This summer, we'll keep you informed bi-weekly, and we're posting information on a new bulletin board as well. Additionally, each Sunday, we'll have one or more committee members wearing spectacular name tags that identify us as being happy to talk with you. As the designated reporter



– Tim McIntire (contact information in the directory and on the bulletin board) – I can share, listen, and direct you to others more knowledgeable. As with every significant endeavor, the first and most contribution is awareness. As we do our important work, we want comprehensive attention through awareness. We've logged nearly a year's effort already with much lying ahead.

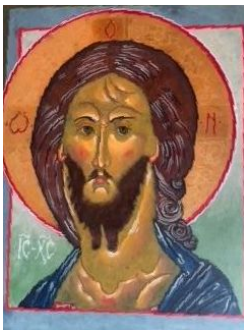
In brief, we have worked diligently with our architects to be at a point where tentative designs are drawn and are available for cost estimations. On Tuesday, June 11, we recommended to the Vestry and Clergy the contractor who best fit us, feeling honored by the quality of firms who were eager to work with us. In April, we took a road trip to Colorado Springs to test out a remarkable instrument to replace our aged organ. The Vestry's Finance and the BRC Committees are active to assure we can deliver what our St. Mark's Community needs.

At the heart of our work for you are four cornerstones:

- Accessibility
- Flexibility
- Music
- Beauty

*Be aware. Share. Question. Pray.*

## Beginning Iconography Class - Reserve Your Spot Now!



A beginning icon painting class will be offered this fall on the first Saturday of each month lead by Lin Marksbury. We will paint "The Rublev Christ" using egg-tempera + mineral pigments on a wooden, gessoed board. No prior painting experience is required. Cost per person is \$300 which includes all materials. Space is limited - email Lin ([via email here](#)) or phone/text (505) 307-5230 to reserve your place.

**Dates:** August 3, September 7, October 5, November 2 from 9AM to 12 PM in the chapel or the library at St. Mark's.

## Outreach Committee (Help Asylum Seekers)



Last weekend, the Outreach Committee met, after making 108 lunches for Church Unbound. We agreed that St. Mark's will send some money to the Roadrunner Food bank to help with the summer feeding program. Summer is the hungriest time of the year.

Buses of immigrants/refugees/asylum seekers have started up again. The most recent bus had 14 families. Currently, the buses are arriving every other Thursday. Volunteers are needed in all capacities. Spanish not necessary. If you would like to help, please contact Pauline Artery ([via email here](#)). Pauline volunteers in the clothing room, but there are other ways to volunteer (like medicine, travel, clothing, and food).

**Please help the newly arrived refugees by bringing the following items to St. Mark's and putting them in the labeled box in the narthex:**

- Diapers size 4 and 6
- Ladies clothing size small tops, bottoms, underwear
- Men's pants – stretchy at the hemline – sweats or jogging pants – ICE is putting them in ankle bracelets.
- Kids clothing
- Long sleeve shirts are helpful for bus and air travel
- Hygiene products

- **Coloring books and crayons for the younger kids**

If you have any questions, please contact Deacon David for more information ([email him here](#)).

## ABQ FaithWorks: World Refugee Day and Potluck Supper



Please join ABQ FaithWorks between now and June 20th to support the asylum seekers we walk with through our World Refugee Day campaign. Donate, share, or create your own fundraising page to widen our community of support for all newcomers! Simply go to [www.abqfaithworks.org](http://www.abqfaithworks.org) and click on "Start Now".

And on **June 21st at 6:00 p.m.**, we will be celebrating the culmination of this campaign with a simple potluck supper at First Unitarian Universalist Church, Memorial Hall. To sign up for the potluck, [click here](#).

## Sign Up for the All-Parish Campout (Only 36 Days Away!)



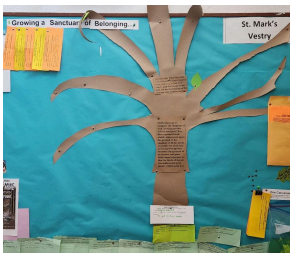
**Friday, July 19 – Sunday, July 21**

**LET US KNOW YOU'RE COMING!**  
Please sign up in the narthex.

- The all-parish campout is back for the second year running! Come for both nights, one night, for the hike, and/or for Sunday Eucharist (drive up and join us if you're not camping).
- The campground is six miles west of Bandelier National Monument near Los Alamos, NM.
- This is a tent-only campground with a covered cooking shelter, pit toilets and drinking water. There is room for one or two campers-but no hookups are available.
- Friday: we will gather any time after 4 PM to up tents, relax play games and more.
- Join the optional hike on Saturday afternoon, then enjoy a potluck meal on Saturday evening. Bring your own main dish and a side to share.
- Worship and Holy Eucharist will be held outside on Sunday morning.
- Check-in time is 4:00 PM on Friday
- Check-out time is 11:30 AM on Sunday
- Max attendees: 100
- We extend a hearty welcome to SMMS families and those from Cub Scout Pack #990
- Cost is \$5 per person per night – to be collected by Lucy or Scott Sinkular at the campground. Any extra funds collected beyond the campground expenses will go in the offering plate.

All ages are welcome and so are polite canines. If you have any questions, please contact Lucy at (703) 638-4286 or Scott at (703) 638-2770. We look forward to a fun time together.

## Summer of Conversation: Add a Leaf to the Tree for Each Person You Meet With



**Add a Leaf to the Tree!**

*And the leaves of the tree are for the healing of the nations...*

**Add a leaf to the tree (on the bulletin board between the parish hall and the restrooms) for each intentional meeting you have as part of our Summer of Conversation!**

**Make an appointment to meet with Mother Sylvia**

Looking to kick off your Summer of Conversation by sitting down to talk with one of our clergy? [Click here to sign up for an appointment with Mo. Sylvia.](#) If none of the available appointments work for you, please contact Mo. Sylvia directly to work out an alternative meeting time, [via email here.](#)

To have **make an appointment with Deacon David**, contact him [via email here.](#)

## ST. MARK'S MONTESSORI SCHOOL

### Summer Program at SMMS



We invite skilled community members to share their trade with our students. Thank you, Marcie, for including our children in the improvements of their school!

## GIVE TO ST. MARK'S



**Give by mail** (St. Mark's has a secure mailbox and is checked regularly). Send to: 431 Richmond Place NE, Albuquerque, NM 87106.



**Give electronically through [By PayPal®](#).**

**Please consider checking the box that reads, "I'd like to add to my donation to help offset the cost of processing."**



**Give electronically through the [Diocese of the Rio Grande Parish Donation site](#) and check the box next to "Albuquerque-St. Mark's".**

Just fill out the rest of the information and **click the Next button at the bottom of the page. Please make sure fill out "special instructions or comment" to let us know how to apply your gift** (e.g., pledge, congregational relief fund, etc.).

## DIOCESE & BEYOND

**Join the DRG Women's Ministry Summer Book Study**

**Women's Ministry of the DRG offers a  
Book Study of Falling Upward by Richard Rohr**

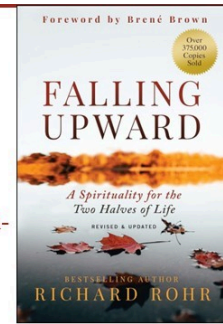
**Starts July 11 at 6:30 PM on Zoom**

**Led by Linda White,**

(Cathedral Member, MA in English literature/ Stanford, Member of Women's Ministry Council)

The book is available on Amazon and many other places.

Contact [Linda White](mailto:cwhite.lwhite@gmail.com) (cwhite.lwhite@gmail.com) or  
[Cindy Davis](mailto:cynthiadavisauthor@gmail.com) (cynthiadavisauthor@gmail.com) for the Zoom link.



Linda White, Women's Ministry Board Member, is facilitating a summer book study. Study of Richard Rohr's book, *Falling Upward*, begins July 11 at 6:30 p.m. on Zoom. If you are interested in participating, contact [Linda White](mailto:cwhite.lwhite@gmail.com) or [Cindy Davis](mailto:cynthiadavisauthor@gmail.com) for the Zoom link.

## General Convention 2024

**The General Convention is the governing body of The Episcopal Church. Every three years it meets as a bicameral legislature that includes the [House of Deputies](#) and the [House of Bishops](#), composed of deputies and bishops from each diocese.**

**Why is this coming [General Convention](#), the 81st, important?** This General Convention marks the conclusion of Presiding Bishop Michael B. Curry's primacy and the election of his successor, [the 28th presiding bishop of The Episcopal Church](#).

### **Who is going to be there?**

The short answer is lots of people, just like you, lay and clergy, including deputies from each of our 110 dioceses in the United States and abroad, lay leadership and diocesan bishops, as well as members of the Episcopal Church Women, and other visitors.

### **Where is it going to be?**

LOUISVILLE, KENTUCKY! The 81st General Convention will take place June 23 – 28, 2024, in Louisville, Kentucky, at the Kentucky International Convention Center.

### **When is it going to be?**

June 23 – 28, 2024

### **What else don't I know?**

- [There is a special children's program for children and young people.](#)
- [There is an opportunity for YOU to volunteer.](#)
- [There is an Official Youth Presence with delegates from each province.](#)

### **Doing this work:**

- [The Staff of The General Convention Office](#)
- [The Diocese of Kentucky](#)
- [The hospitality and convention industry in Louisville](#)
- [And hundreds of volunteers from around The Episcopal Church - Thank You!](#)

### **Go Deeper**

- [The 81st General Convention](#)
- [The Blue Book Reports](#) – Reports by each standing committee, the Executive Council, the House of Deputies, and the House of Bishops.
- [Calendar of the Convention](#) – What happens each day, including the election of the next presiding bishop?

[See more here.](#)



All are welcome to join us for worship during our Thursday 11 a.m. midweek Holy Eucharists and our Sunday Holy Eucharists at 9:30 a.m. You may join us in person or on Facebook & YouTube.  
Come as you are!

Email submissions should be sent ([via email](#)) to the Communications Specialist by 9:00 a.m. each Wednesday for inclusion on Thursday's e-news.

[www.stmarksabq.org](http://www.stmarksabq.org)

© 2024

St Mark's Episcopal Church | 431 Richmond Place NE | Albuquerque, NM 87106 US

[Unsubscribe](#) | [Constant Contact Data Notice](#)



Try email marketing for free today!