

SHARE:

[Join Our Email List](#)

## The Messenger of St. Mark's | After Pentecost | June 6, 2024

For your thought:

*Yes, everything is for your sake, so that grace, as it extends to more and more people, may increase thanksgiving, to the glory of God.*

--2 Corinthians 4:15



[Study this Sunday's Readings.](#)

Lectionary Note: From 6/2 until Advent (12/1), we will be reading from Track 1 for our Old Testament readings - Psalms, Epistle and Gospel readings will be from Track 2.

## WORSHIP CORNER



Worship on Sunday is both in person and virtually, every week at 9:30 a.m. We live stream Sunday liturgies on our [Facebook](#) & [YouTube](#) channels.

Also, we offer a Midweek Eucharist every Thursday at 11 a.m. that is both in person and on our live-streaming platforms.

[Order of Worship](#)

This Sunday's Coffee Hour brought to you by:

The 2nd-Sunday-of-the-Month team (all parishioners with the last names beginning with the letters F-L: please bring ready-to-serve food items this Sunday to share at Coffee Hour).



A huge THANK YOU to all who bring food to share, and to those serving on coffee-hour teams, for our radical hospitality at St. Mark's would not be possible without your contributions!

[All Offerings](#)

Useful links:

- [Fill out a form](#) to volunteer, donate altar flowers, fill out a new member/visitor form, and more!
- Access and/or edit your [Member Directory](#) information.
- To read or view [previous sermons](#), [click here](#).
- [Schedule a meeting with Mother Sylvia](#) [by clicking here](#).

### Important Upcoming Dates:

- Sat., June 8, 8 a.m., Meet at St. Mark's for Pride Parade & Trolley
- Sat. June 8, 11 a.m., Sandwich Making for Church Unbound (in person/kitchen)
- Thurs., June 13, 9:30 to 10:25 a.m. – Men's Book Study (In person/Library)
- Wed., June 19, 7 p.m., Singing Summertime Evening Prayer Begins (in person/Nave)
- Sun., June 30, 10:45 a.m., Coffee Hour: Pancake Breakfast - Please bring sides to share.

## SAINT MARK'S MISSION, MINISTRY & OUTREACH

### THIS Saturday: Join St. Mark's at the 2024 ABQ Pride Parade



Join St. Mark's and the LGBTQ+ Ministry of the Diocese of the Rio Grande as we march in the Albuquerque Pride Parade – **Saturday, June 8**. We will meet the ABQ Trolley in St. Mark's west parking lot at 7:45 a.m. or you can join us in the parade line up near Girard Blvd and Central Ave. The parade starts at 10:00.

There will also be a Pride Eucharist at St. Michaels and All Angels Episcopal Church on Friday evening, June 7, at 6:00 pm.

Everyone is invited to participate.

---



LGBTQ+ Ministry of the Episcopal Diocese of the Rio Grande  
Albuquerque PRIDE Events

**Worship**

**Friday, June 7, 2024**

6:00 pm (mountain time)

in person at St. Michael and All Angels Episcopal Church  
601 Montano Rd NW, Albuquerque, NM 87107  
a light reception will follow in the Parish Hall

[Click here to join the liturgy on St. Michael's Facebook page](#)

**Albuquerque Pride Parade**

**Saturday, June 8, 2024**

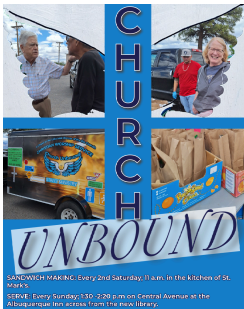
8:00: Meet at St. Mark's, 431 Richmond Pl NE, to board the Abq. Trolley  
or

9:00 – 10:00 am: Gather for fellowship at the Albuquerque Trolley  
We'll be in the parade line up on Central Ave. east of Girard Blvd.  
10:00 am – Parade Kickoff



For more information contact  
Rev. Mike Angell or Rev. David Martin at  
LGBTQdrg@gmail.com

## This Saturday: Church Unbound Sandwich Making



St. Mark's prepares brown-bag lunches for Church Unbound every Second Saturday of the month in the kitchen of St. Mark's at 11 a.m. If you have questions for the sandwich-making team, please contact Joan Camera [via email here](#).

Church Unbound meets every Sunday, rain or shine (except New Year's Day, 1/1/2024 and the second weekend in July, 7/9/23).

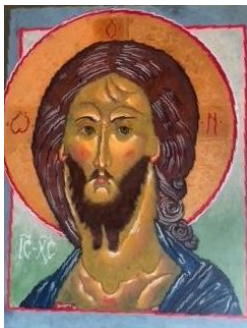
Anyone who feels called to minister or participate in worship services with the unsheltered and displaced (for example, musicians, greeters, lay readers, prayer partners, preachers, etc. are welcome)!

- 1:00pm-1:30pm Set Up
- 1:30pm-2:00PM Pre-service Fellowship
- 2:00pm -2:30PM Worship Service w/ Communion

**Location:** Central and Charleston. (International District, by the former Caravan Dance Hall and the new Public Library). Look for signage and the white tent.

If you have questions, please contact Dean Kristi Maulden at 505-247-1581 ext. 102 or Amy Malick at 1-860-805-1784, or Chloe Chavez at 505-250-9589.

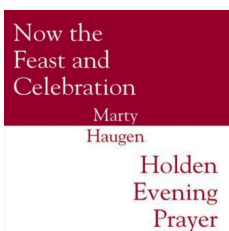
## Beginning Iconography Class - Reserve Your Spot Now!



A beginning icon painting class will be offered this fall on the first Saturday of each month lead by Lin Marksbury. We will paint "The Rublev Christ" using egg-tempera + mineral pigments on a wooden, gessoed board. No prior painting experience is required. Cost per person is \$300 which includes all materials. Space is limited - email Lin ([via email here](#)) or phone/text (505) 307-5230 to reserve your place.

**Dates:** August 3, September 7, October 5, November 2 from 9AM to 12 PM in the chapel or the library at St. Mark's.

## Starting Wednesday, June 19: Singing Summertime Evening Prayer



### Singing Summertime Evening Prayer Wednesdays, 7 p.m.; June 19-July 31

This summer, join members of St. Mark's choir and congregation for 30 minutes of simple, lovely, contemplative songs and prayers on Wednesday evenings at 7 p.m. beginning June 19th. We will be using "Holden Evening Prayer," a sung setting of evening prayer. These are composed by Marty Haugen during the winter of 1985–1986, while at Holden Village, in the North Cascade Mountains of Washington state. All are welcome!

For more info, please contact Jeremy Wirths [via email here](#).

## Brush up on your Bible Stories: The Books of Samuel



This Sunday, when you come to church, you will notice that the altar is draped in green. We are entering the "Season After Pentecost", also known as "Ordinary Time" or "The Great Green Growing Season", which extends until we begin the season of Advent and begin preparing for Christmas. During this "Green" Season, we have a choice between two different sets of readings when it comes to the First Reading (the reading from the Hebrew Scriptures, aka the "Old Testament") for our Sunday services. In the interest of growing our congregational knowledge of core bible stories, we've decided to follow "Track 1" this year. The first track of

Old Testament readings ("Track 1") follows major stories and themes, read mostly continuously from week to week. In Year A we begin with Genesis, in Year B (this year) we hear some of the great monarchy narratives, and in Year C we read from the later prophets. [A second track of readings ("Track 2") follows the Roman Catholic tradition of thematically pairing the Old Testament reading with the Gospel reading, often typologically—a sort of foretelling of Jesus Christ's life and ministry, if you will. This second track is almost identical to our previous Book of Common Prayer lectionary.] The "first reading" on Sundays throughout the summer will come from the books of Samuel. We encourage you to take 15 minutes to familiarize yourself with the arc of the narrative, by watching these brief video overviews of [1st Samuel](#) and [2nd Samuel](#) courtesy of the Bible Project.

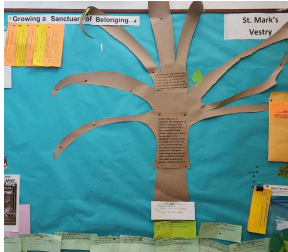
## New Art Exhibit: Rio Grande Art Association (Oil, Acrylics & Mixed Media)



Check out the new Rio Grande Art Association Art Exhibit in the Parish Hall Starting on June 1, running through August 31.

St. Mark's retains a 20% commission on all artwork sold.

## Summer of Conversation: Add a Leaf to the Tree for Each Person You Meet With



### Add a Leaf to the Tree!

*And the leaves of the tree are for the healing of the nations...*

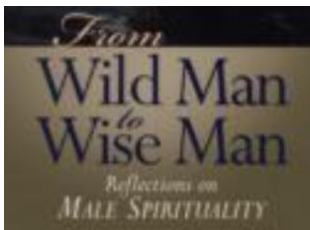
**Add a leaf to the tree (on the bulletin board between the parish hall and the restrooms) for each intentional meeting you have as part of our Summer of Conversation!**

### Make an appointment to meet with Mother Sylvia

Looking to kick off your Summer of Conversation by sitting down to talk with one of our clergy? [Click here to sign up for an appointment with Mo. Sylvia.](#) If none of the available appointments work for you, please contact Mo. Sylvia directly to work out an alternative meeting time, [via email here.](#)

To have **make an appointment with Deacon David**, contact him [via email here.](#)

## Men's Book Study



Thursday, June 13, 9:30 to 10:25 AM – Men's Book Study of Richard Rohr's *From Wild Man to Wise Man*. We will be discussing chapters 17-20. (In person/Library)

## Please Sign Up for the All-Parish Campout



Friday, July 19 – Sunday, July 21

**LET US KNOW YOU'RE COMING!**

**Please sign up in the narthex.**

- The all-parish campout is back for the second year running! Come for both nights, one night, for the hike, and/or for Sunday Eucharist (drive up and join us if you're not camping).
- The campground is six miles west of Bandelier National Monument near Los Alamos, NM.
- This is a tent-only campground with a covered cooking shelter, pit toilets and drinking water. There is room for one or two campers-but no hookups are available.
- Friday: we will gather any time after 4 PM to up tents, relax play games and more.

- Join the optional hike on Saturday afternoon, then enjoy a potluck meal on Saturday evening. Bring your own main dish and a side to share.
- Worship and Holy Eucharist will be held outside on Sunday morning.
- Check-in time is 4:00 PM on Friday
- Check-out time is 11:30 AM on Sunday
- Max attendees: 100
- We extend a hearty welcome to SMMS families and those from Cub Scout Pack #990
- Cost is \$5 per person per night – to be collected by Lucy or Scott Sinkular at the campground. Any extra funds collected beyond the campground expenses will go in the offering plate.

All ages are welcome and so are polite canines. If you have any questions, please contact Lucy at (703) 638-4286 or Scott at (703) 638-2770. We look forward to a fun time together.

## ST. MARK'S MONTESSORI SCHOOL



### NOW ENROLLING

AGES 18 months - 6 years  
Monday - Friday  
7:30 am - 5:30 pm

**St. Mark's Montessori School** is a non-profit preschool proudly offering an authentic Montessori curriculum to children ages 18-months-old through kindergarten. We offer three-day and five-day enrollments for toddlers as well as before and after care options.

**St. Mark's Montessori School** is conveniently located in Nob Hill, within walking distance of the University of New Mexico campuses, at **431 Richmond Place NE.**

Visit our website at [www.stmarksschoolabq.org](http://www.stmarksschoolabq.org) or scan the QR Code for more detailed information about our curriculum, tuition, and enrollment options including discounts and funding opportunities, and to register.



**(505) 582-3898**



## GIVE TO ST. MARK'S



**Give by mail** (St. Mark's has a secure mailbox and is checked regularly). Send to: 431 Richmond Place NE, Albuquerque, NM 87106.



**Give electronically through [By PayPal®](#).**



**Please consider checking the box that reads, "I'd like to add to my donation to help offset the cost of processing."**



**Give electronically through the [Diocese of the Rio Grande Parish Donation site](#) and check the box next to "Albuquerque-St. Mark's".**

Just fill out the rest of the information and **click the Next button at the bottom of the page. Please make sure fill out "special instructions or comment" to let us know how to apply your gift** (e.g., pledge, congregational relief fund, etc.).

## DIOCESE & BEYOND

### General Convention 2024

The General Convention is the governing body of The Episcopal Church. Every three years it meets as a bicameral legislature that includes the [House of Deputies](#) and the [House of Bishops](#), composed of deputies and bishops from each diocese.

**Why is this coming [General Convention](#), the 81st, important?** This General Convention marks the conclusion of Presiding Bishop Michael B. Curry's primacy and the election of his successor, [the 28th presiding bishop of The Episcopal Church](#).

#### **Who is going to be there?**

The short answer is lots of people, just like you, lay and clergy, including deputies from each of our 110 dioceses in the United States and abroad, lay leadership and diocesan bishops, as well as members of the Episcopal Church Women, and other visitors.

#### **Where is it going to be?**

LOUISVILLE, KENTUCKY! The 81st General Convention will take place June 23 – 28, 2024, in Louisville, Kentucky, at the Kentucky International Convention Center.

#### **When is it going to be?**

June 23 – 28, 2024

#### **What else don't I know?**

- [There is a special children's program for children and young people.](#)
- [There is an opportunity for YOU to volunteer.](#)
- [There is an Official Youth Presence with delegates from each province.](#)

#### **Doing this work:**

- [The Staff of The General Convention Office](#)
- [The Diocese of Kentucky](#)
- [The hospitality and convention industry in Louisville](#)
- [And hundreds of volunteers from around The Episcopal Church - Thank You!](#)

#### **Go Deeper**

- [The 81st General Convention](#)
- [The Blue Book Reports](#) – Reports by each standing committee, the Executive Council, the House of Deputies, and the House of Bishops.
- [Calendar of the Convention](#) – What happens each day, including the election of the next presiding bishop?

[See more here.](#)



All are welcome to join us for worship during our Thursday 11 a.m. midweek Holy Eucharists and our Sunday Holy Eucharists at 9:30 a.m. You may join us in person or on Facebook & YouTube. Come as you are!

Email submissions should be sent ([via email](#)) to the Communications Specialist by 9:00 a.m. each Wednesday for inclusion on Thursday's e-news.

[www.stmarksabq.org](http://www.stmarksabq.org)

© 2024

St Mark's Episcopal Church | 431 Richmond Place NE | Albuquerque, NM 87106 US

[Unsubscribe](#) | [Constant Contact Data Notice](#)



Try email marketing for free today!